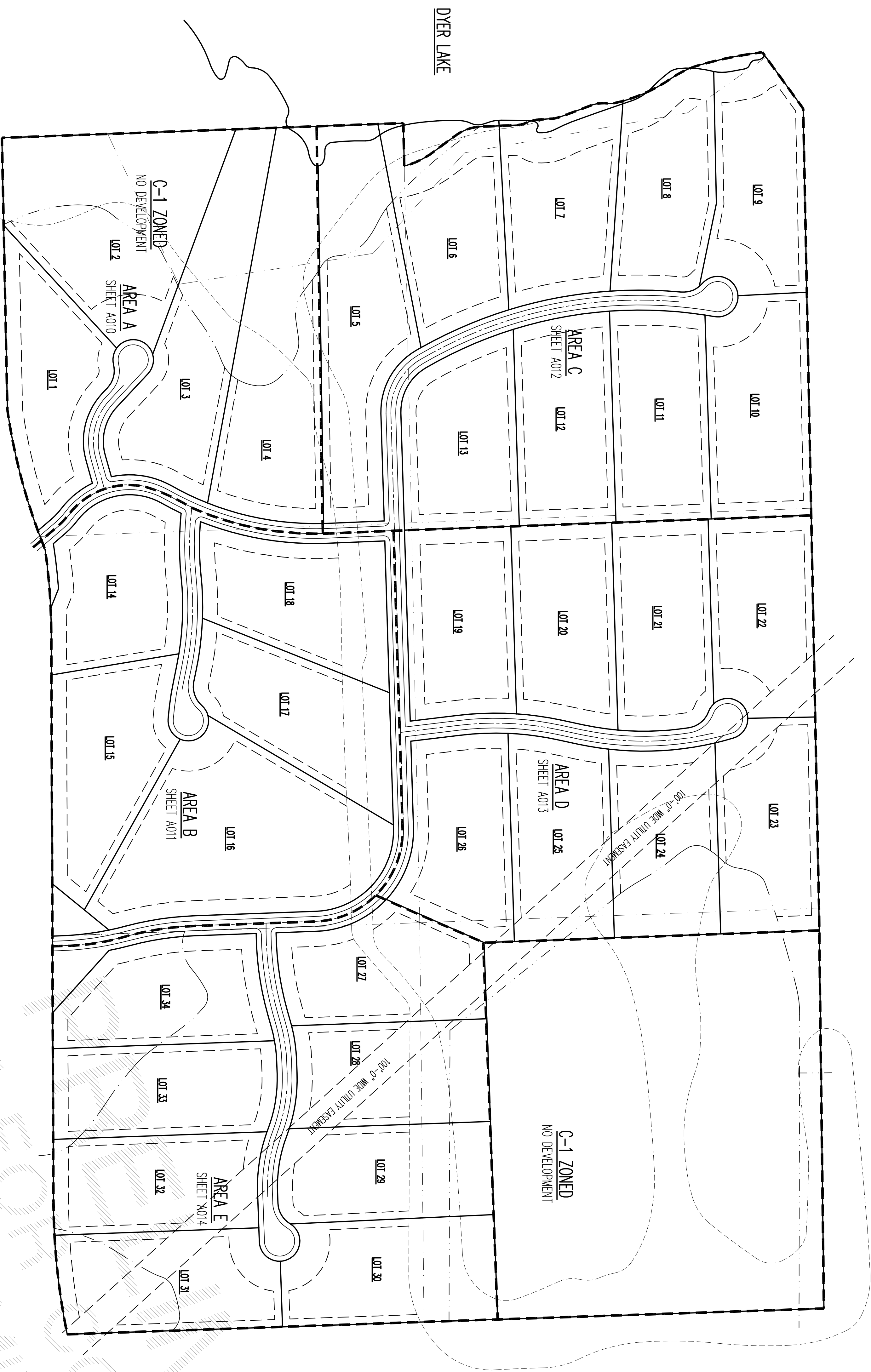


MASTER PLAN FOR: NEW DEVELOPMENT AT DYER LAKE WHEATLAND, WI



GENERAL NOTES

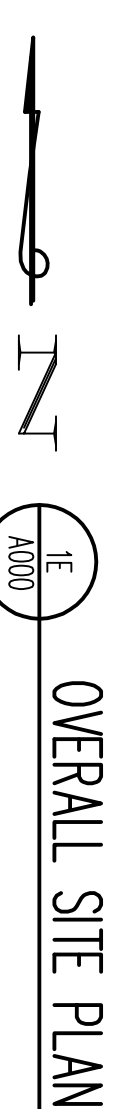
34 TOTAL LOTS
 ALL ROAD RIGHT OF WAYS ARE 66'-0" WIDE.
 ALL ROADWAYS SHOWN ARE 36'-0" WIDE.

SETBACKS:
 FRONT YARD SETBACKS: 50'-0"
 OUT-DE-SAC FRONT SETBACKS: 100'-0"
 SIDE YARD SETBACKS: 25'-0"
 EXTERIOR SIDE YARD SETBACKS: 50'-0"
 REAR YARD SETBACKS: 50'-0"

ALL LOT WIDTHS IN OUT-DE-SACS AT THE FRONT YARD SETBACK LINE ARE 150'-0" MIN.

DRAWING INDEX

A000	OVERALL SITE PLAN, GENERAL NOTES, DRAWING INDEX
A001	OVERALL TOPOGRAPHIC PLAN
A010	SITE PLAN - AREA A
A011	SITE PLAN - AREA B
A012	SITE PLAN - AREA C
A013	SITE PLAN - AREA D
A014	SITE PLAN - AREA E



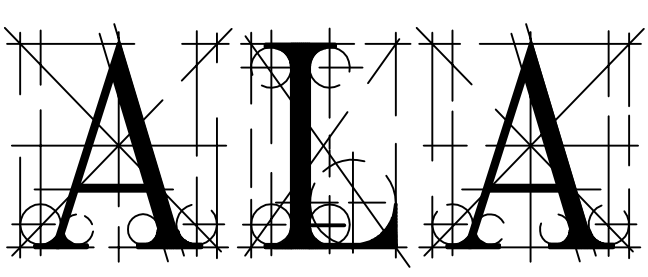
OVERALL SITE PLAN

1"=200'-0"

DESIGN STAGE	REVISIONS				
	1	2	3	4	5
CONCEPTUAL DESIGN					
PRELIMINARY DESIGN	03-03-21 TDA	03-08-21 TDA	03-19-21 TDA	03-25-21 TDA	
DESIGN DEVELOPMENT					
RELEASE FOR BID					
FINAL REVIEW					
RELEASE FOR PERMIT					
REVISION					

OVERALL SITE PLAN
 LOCATION PLAN
 GENERAL NOTES
 DRAWING INDEX

MASTER PLAN FOR:
 NEW SUBDIVISION AT DYER LAKE
 WHEATLAND, WI

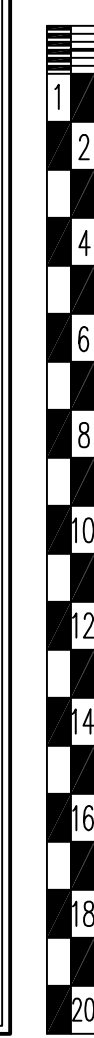


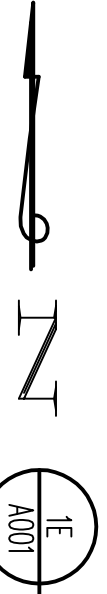
Architects & Planners, Inc.
 2600 Behan Road at Rt. 176
 Crystal Lake, Illinois 60014
 Telephone: 815-788-9200 Fax: 815-788-9201

PRELIMINARY

Sheet Number
 A000

File Name: 21034000



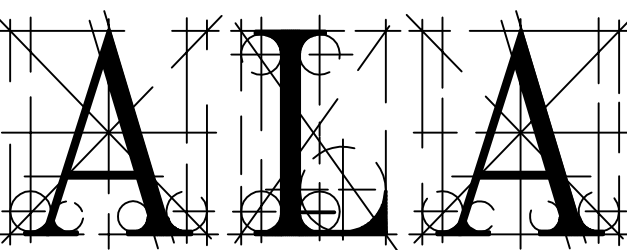


OVERALL TOPOGRAPHIC PLAN

1"=200'-0"

OVERALL TOPOGRAPHIC PLAN

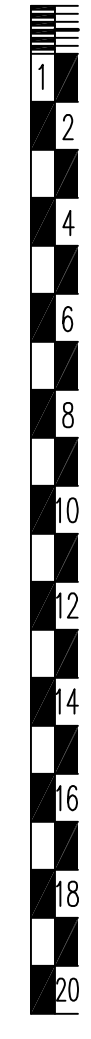
MASTER PLAN FOR:
NEW SUBDIVISION AT DYER LAKE
WHEATLAND, WI



Architects & Planners, Inc.
2600 Behan Road at Rt. 176
Crystal Lake, Illinois 60014
Telephone: 815-788-9200 Fax: 815-788-9201

PRELIMINARY

DESIGN STAGE	REVISIONS				
	1	2	3	4	5
CONCEPTUAL DESIGN					
PRELIMINARY DESIGN	03-03-21 TDA	03-08-21 TDA	03-19-21 TDA	03-25-21 TDA	
DESIGN DEVELOPMENT					
RELEASE FOR BID					
FINAL REVIEW					
RELEASE FOR PERMIT					
REVISION	△	△	△	△	△





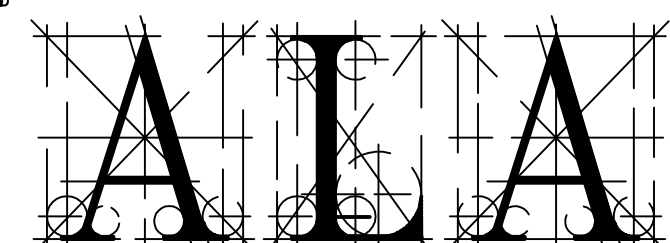
SITE PLAN - AREA A

1"=80'-0"

COPYRIGHT AS DATED © ALA Architects & Planners, Inc.

Sheet Number
A110

Job Number
21034



Architects & Planners, Inc.
2600 Behan Road at Rt. 176
Crystal Lake, Illinois 60014
Telephone: 815-788-9200 Fax: 815-788-9201

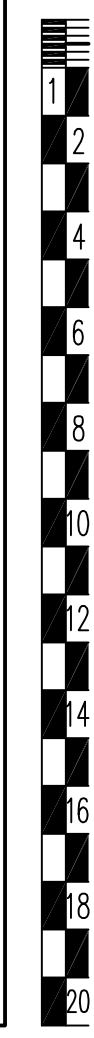
SITE PLAN - AREA A

PRELIMINARY

MASTER PLAN FOR:
NEW SUBDIVISION AT DYER LAKE
WHEATLAND, WI

DESIGN STAGE	REVISIONS				
	1	2	3	4	5
CONCEPTUAL DESIGN					
PRELIMINARY DESIGN	03-03-21 TDA	03-08-21 TDA	03-19-21 TDA	03-25-21 TDA	
DESIGN DEVELOPMENT					
RELEASE FOR BID					
FINAL REVIEW					
RELEASE FOR PERMIT					
REVISION	△	△	△	△	△

File Name: 21034010



E D C B A

1

2

3

4

5

6

7

1

2

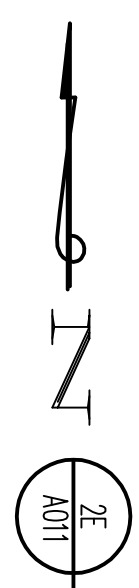
3

4

5

6

7



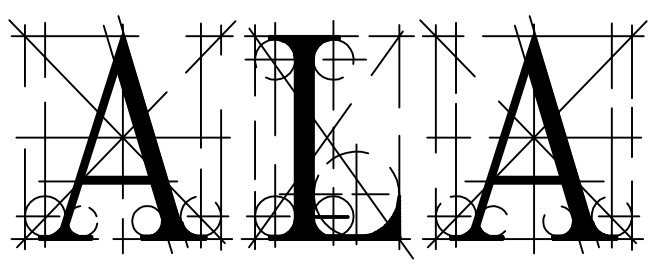
SITE PLAN - AREA B

1"=80'-0"

COPYRIGHT AS DATED © ALA Architects & Planners, Inc.

Sheet Number A011

Job Number 21034



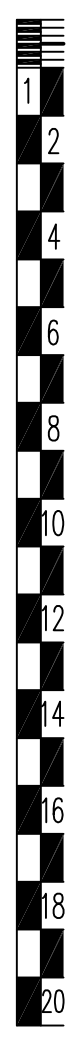
Architects & Planners, Inc.
 2000 Behan Road at Rt. 176
 Crystal Lake, Illinois 60014
 Telephone: 815-788-9200 Fax: 815-788-9201

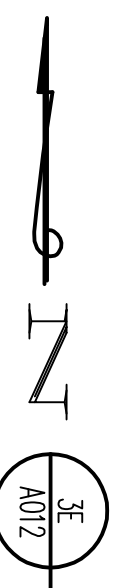
SITE PLAN - AREA B

PRELIMINARY

MASTER PLAN FOR:
 NEW SUBDIVISION AT DYER LAKE
 WHEATLAND, WI

DESIGN STAGE	REVISIONS				
	1	2	3	4	5
CONCEPTUAL DESIGN					
PRELIMINARY DESIGN	03-03-21 TDA	03-06-21 TDA	03-19-21 TDA	03-25-21 TDA	
DESIGN DEVELOPMENT					
RELEASE FOR BID					
FINAL REVIEW					
RELEASE FOR PERMIT					
REVISION					





SITE PLAN - AREA C

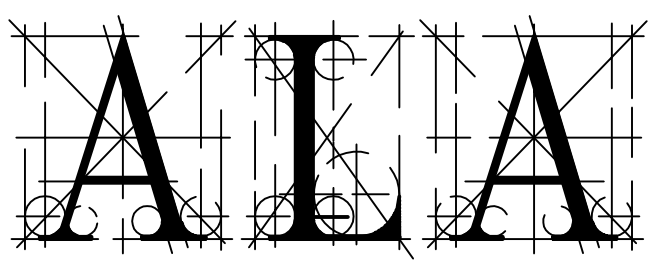
1" = 80'-0"

1 2 3 4 5 6

1 2 3 4 5 6 7 8 9 10 11 12 13 14 15 16 17 18 19 20

CONVERTED TO DATE
ALA Architects & Planners, Inc.

Sheet Number: A012
Job Number: 21034
File Name: 21034012



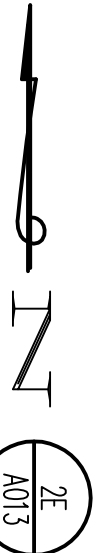
Architects & Planners, Inc.
2000 Behan Road at Rt. 176
Crystal Lake, Illinois 60014
Telephone: 815-788-9200 Fax: 815-788-9201

SITE PLAN - AREA C

PRELIMINARY

MASTER PLAN FOR:
NEW SUBDIVISION AT DYER LAKE
WHEATLAND, WI

DESIGN STAGE	REVISIONS				
	1	2	3	4	5
CONCEPTUAL DESIGN					
PRELIMINARY DESIGN	03-03-21 TDA	03-06-21 TDA	03-19-21 TDA	03-25-21 TDA	
DESIGN DEVELOPMENT					
RELEASE FOR BID					
FINAL REVIEW					
RELEASE FOR PERMIT					
REVISION					



SITE PLAN - AREA D

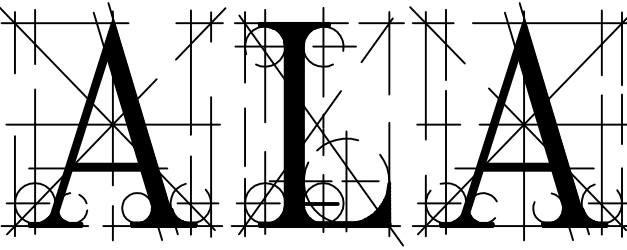
1"=80'-0"

COPYRIGHT AS DATED © ALA Architects & Planners, Inc.

Sheet Number: A013

Job Number: 21034

File Name: 21034013



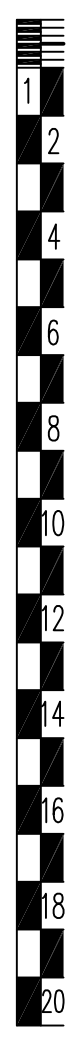
Architects & Planners, Inc.
2600 Behan Road at Rt. 176
Crystal Lake, Illinois 60014
Telephone: 815-788-9200 Fax: 815-788-9201

SITE PLAN - AREA D

MASTER PLAN FOR:
NEW SUBDIVISION AT DYER LAKE
WHEATLAND, WI

PRELIMINARY

DESIGN STAGE	REVISIONS				
	1	2	3	4	5
CONCEPTUAL DESIGN					
PRELIMINARY DESIGN	03-03-21 TDA	03-06-21 TDA	03-19-21 TDA	03-25-21 TDA	
DESIGN DEVELOPMENT					
RELEASE FOR BID					
FINAL REVIEW					
RELEASE FOR PERMIT					
REVISION	Δ	Δ	Δ	Δ	Δ



E D C B A

1

2

3

4

5

6

7

1

2

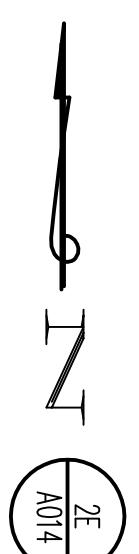
3

4

5

6

7



SITE PLAN - AREA E

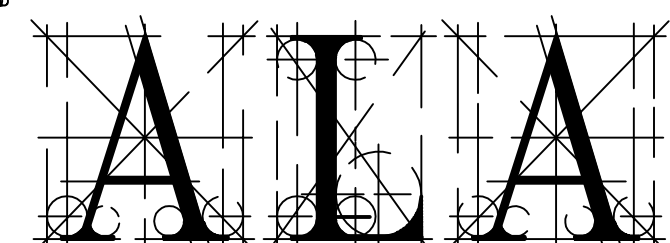
1"=80'-0"

PRELIMINARY
 FOR PERMIT

COPYRIGHT AS DATED © ALA Architects & Planners, Inc.

Sheet Number
A014

Job Number
21034



Architects & Planners, Inc.
 2600 Behan Road at Rt. 176
 Crystal Lake, Illinois 60014
 Telephone: 815-788-9200 Fax: 815-788-9201

SITE PLAN - AREA E

PRELIMINARY

MASTER PLAN FOR:
 NEW SUBDIVISION AT DYER LAKE
 WHEATLAND, WI

DESIGN STAGE	REVISIONS				
	1	2	3	4	5
CONCEPTUAL DESIGN					
PRELIMINARY DESIGN	03-03-21 TDA	03-08-21 TDA	03-19-21 TDA	03-25-21 TDA	
DESIGN DEVELOPMENT					
RELEASE FOR BID					
FINAL REVIEW					
RELEASE FOR PERMIT					
REVISION	△	△	△	△	△

