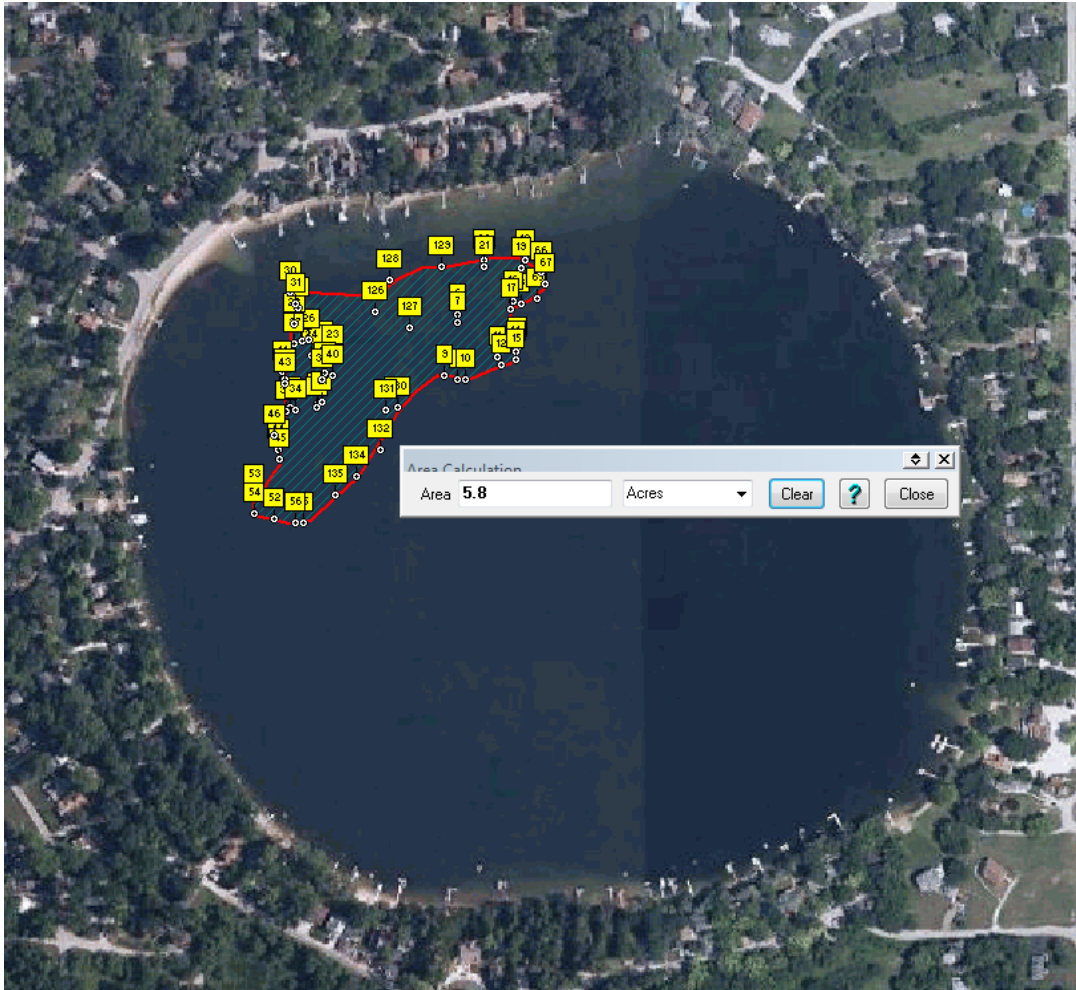


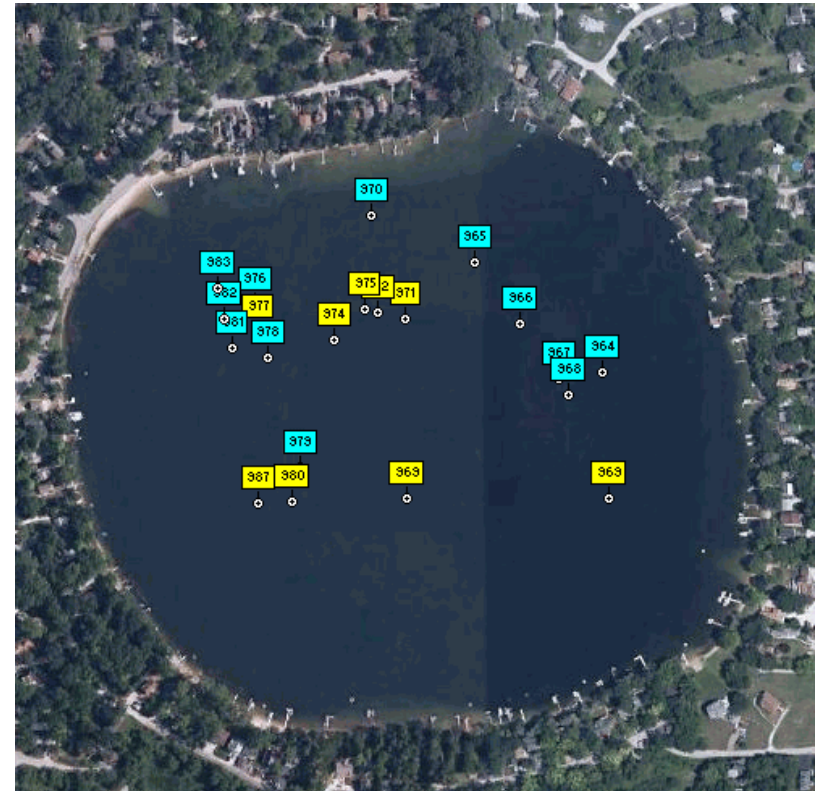
Lilly Lake—Kenosha County, WI

September 20, 2016 Eurasian Watermilfoil Treatment Areas



Lilly Lake—Kenosha County, WI

9/19/17 Survey of 9/20/16 EWM Treatment Area
(One Year Post Treatment)



Note: On the date of treatment in 2016, EWM was sufficiently dense to interfere with navigation at idle speed. Plants were observed more frequently, at the surface and had formed seed heads above surface. One year Post Treatment, plants are observed much less frequently, for the most part well below surface (only three seed heads observed) and there was no impairment to navigation at idle speed.

Waypoint highlighted in Aqua are EWM Points, with main concentration of EWM in area off-shore of Beach (NW corner) being approximately one acre in size. Yellow Points indicate boundary of deep water (>13 ft.)